

Caretaking and Cleaning - Visual Standards

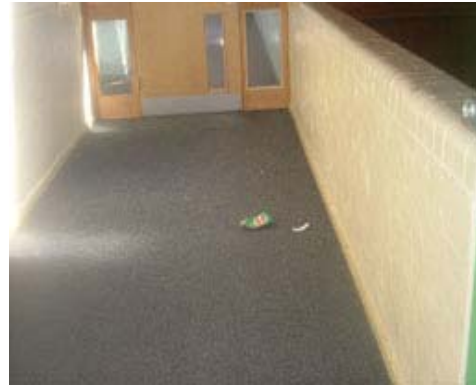
Caretaking and Cleaning estate service standards apply to the following physical elements of estates

Internal landings and carpeted surfaces

All areas to be free from litter, chewing gum, removable stains, dust and dirt, domestic refuse sacks, items of discarded furniture. Areas include all stairs, main entrances and corridors with carpets.



Acceptable



Not acceptable

Internal landings vinyl surfaces

All areas to be free from litter, chewing gum, removable stains, dust and dirt, spillages, bodily fluids, domestic refuse sacks, items of discarded furniture. Areas include all stairs, main entrances and corridors with carpets



Acceptable



Not acceptable

Internal Staircases, landings and entrances

All areas to be free from litter, chewing gum, removable stains, dust and dirt, oil or other slippery material, hazardous material, bodily fluid, domestic refuse sacks



Acceptable



Not acceptable

Refuse Chutes

All areas to be free from litter, chewing gum, removable stains, dust and dirt, oil or other slippery material, hazardous material, domestic refuse sacks



Acceptable



Not Acceptable

Refuse Hopper

All areas to be free litter, chewing gum, removable stains, dust and dirt, oil or other slippery material, domestic refuse sacks bulk lumber/ material



Acceptable



Not acceptable

Internal Painted Surfaces

All areas to be free from litter, chewing gum, removable stains, dust and dirt, oil or other slippery material. Areas include all painted surfaces walls, doors, doorframes, window ledges



Acceptable



Not acceptable

Door and glass/perspex panels

All door and glass/perspex panels must be free from graffiti, chewing gum, removable stains, dust and dirt and hazardous material



Acceptable



Not acceptable

Refuse Bins and Chambers

All refuse bins must be stored safely and securely. All areas must be free from refuse being stored in front of bins, bulk items of furniture and graffiti.



Acceptable



Not acceptable

Lifts (internals)

All lifts (internal) must be free from litter, urine and other bodily fluids, other spillages, dust, cobwebs, domestic refused sacks and graffiti



Acceptable



Not acceptable

Lift Door and Internal Panels

All lift doors and wall panels must be free from dust, cobwebs, graffiti and bodily fluids



Acceptable



Not acceptable

Estate Car Parking Areas and Bays

All car parking areas and bays must be free from litter and other detritus, leaves, domestic refuse sacks, bulk items of furniture, oil and other mechanical fluids, any other hazards, abandoned and untaxed vehicles



Acceptable



Not acceptable

Garage Areas Standards

All garage areas must be free from litter and other detritus, leaves, domestic refuse sacks, bulk items of furniture, domestic refuse sacks, bulk items of furniture, oil and other mechanical fluids, and other health and safety hazards, abandoned and untaxed vehicles



Acceptable



Not acceptable

If you would like this information in any other format including large print, audio CD/tape, Braille or translated into another language please telephone 0113 2141942 and speak to the Equality Officer